

MODULAR SIGNAL SWITCHING UNIT

Orbis Systems Modular Signal Switching Unit (SSU)



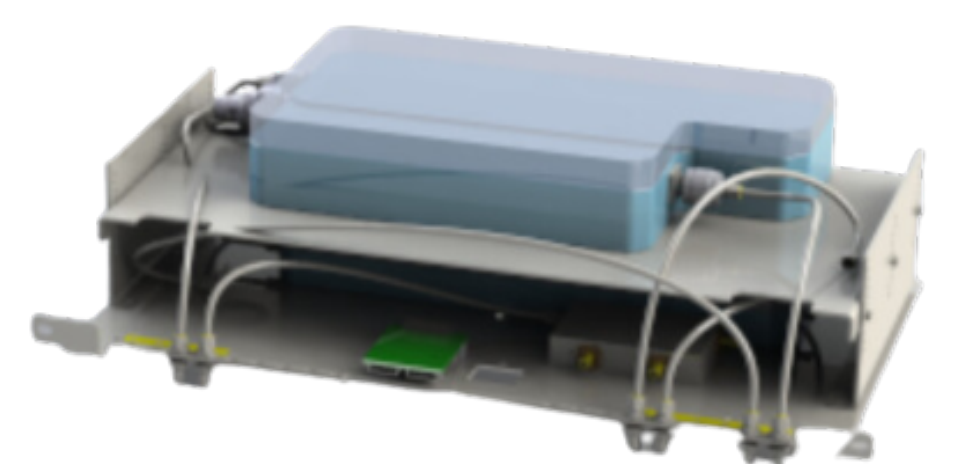
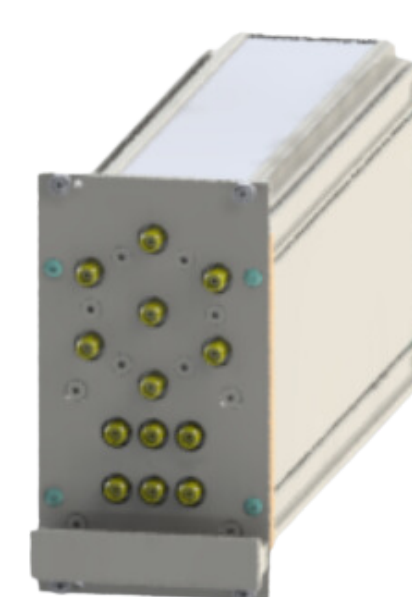
Controller Unit



Relay Module 4002207
1xSP8T relay



Relay Module 4001551
2xSP2T relays
1xSP6T terminated relay



Filter Bank

PRODUCT FEATURES

SSU: Faster and more automated testing

The Orbis Systems Signal Switching Unit (SSU) is a multi-purpose solution for testing base stations, wireless devices, specialized antenna systems and RF components. The SSU is used for RF signal routing between instruments and device(s) under test (DUT). The SSU enables multiple tests to be performed with the same setup removing the need for frequent connections and disconnections.

Modular SSU: Flexibility & efficiency

The Modular RF SSU consists of mechanical SSU cases, modules, filter banks and RF cables. Modules can be customized based on customer's needs and all modules can be re-used in other test configurations. Modular SSU offers best of both worlds: Choose either a complete solution or create a sophisticated in-house solutions using standard cases and plug-in modules.

Modular RF SSU: Easy testing & upgrades

The Modular RF SSU comes with pre-installed software for testing purposes. Smart software and ready-made building blocks simplify creation of new test cases: Only software reconfiguration or adding HW modules are needed.



[Contact us](#)

We create testing solutions for our customers to help them to develop new products and technologies and to secure the high quality and functionality of the products. With our equipment, our customers are able to accelerate product development and reduce manufacturing costs in production.

We are driving the technological change and building the future automated world. We want to solve our customers' testing problems and to be the leader of the 5G breakthrough. We are pioneers of solving rough technological challenges and we deliver bigger than we are. In our design we ask why instead of what and how.

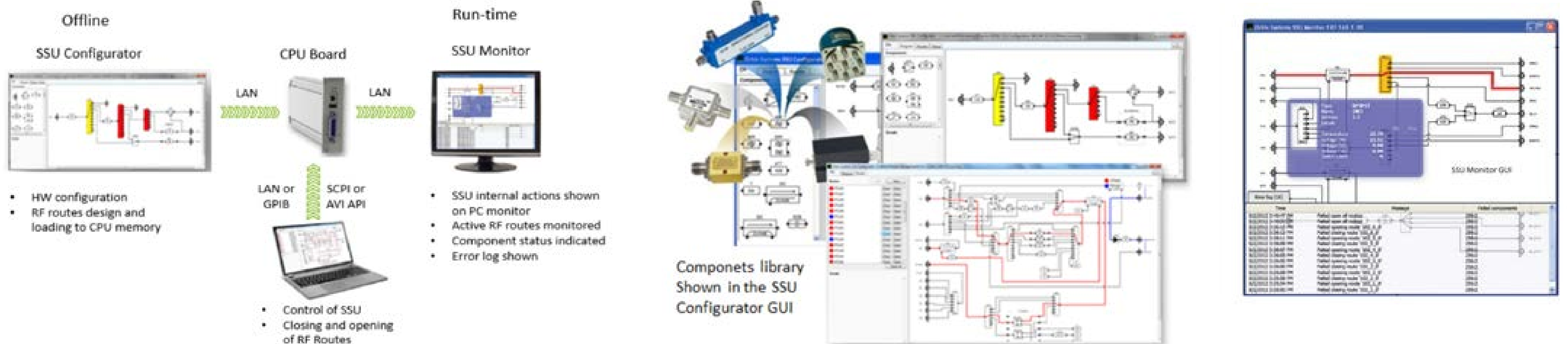
In Orbis Systems we call it knowledge - A whole new ball game.

ORBIS SYSTEMS OY
Konekuja 2
FI-90620 Oulu
Finland
+358 290 040 800
www.orbissystems.eu

v 0.0.2

MODULAR SIGNAL SWITCHING UNIT

Orbis Systems Modular Signal Switching Unit (SSU)



Modular RF SSU's SW architecture in offline and run-time environment

RF routes defined and simulated in the SSU Configurator GUI

Hardware

- Modular SSU Main Controller Unit module (CPU) and peripheral controller modules (PIOMCU).
- Peripheral controller modules may consist of coaxial RF switches, solid-state RF switches, amplifiers, or other DC-controlled devices
- RF switches, matrix switches

Interfaces

- GPIB, LAN connection
- SCPI or IVI API for communication between customer's software and modular RF SSU

Software (Client Software)

- SSU configurator for HW configurations and components' RF connections and routes
- SSU Monitor for monitoring SSU HW & SW operation on PC monitor. It visualizes SSU's status, internal actions, error logs and the relay switch count defined in the SSU configurator.

Contact us

We create testing solutions for our customers to help them to develop new products and technologies and to secure the high quality and functionality of the products. With our equipment, our customers are able to accelerate product development and reduce manufacturing costs in production.

We are driving the technological change and building the future automated world. We want to solve our customers' testing problems and to be the leader of the 5G breakthrough. We are pioneers of solving rough technological challenges and we deliver bigger than we are. In our design we ask why instead of what and how.

In Orbis Systems we call it knowledge - A whole new ball game.

ORBIS SYSTEMS OY
Konekuja 2
FI-90620 Oulu
Finland
+358 290 040 800
www.orbissystems.eu

v 0.0.2